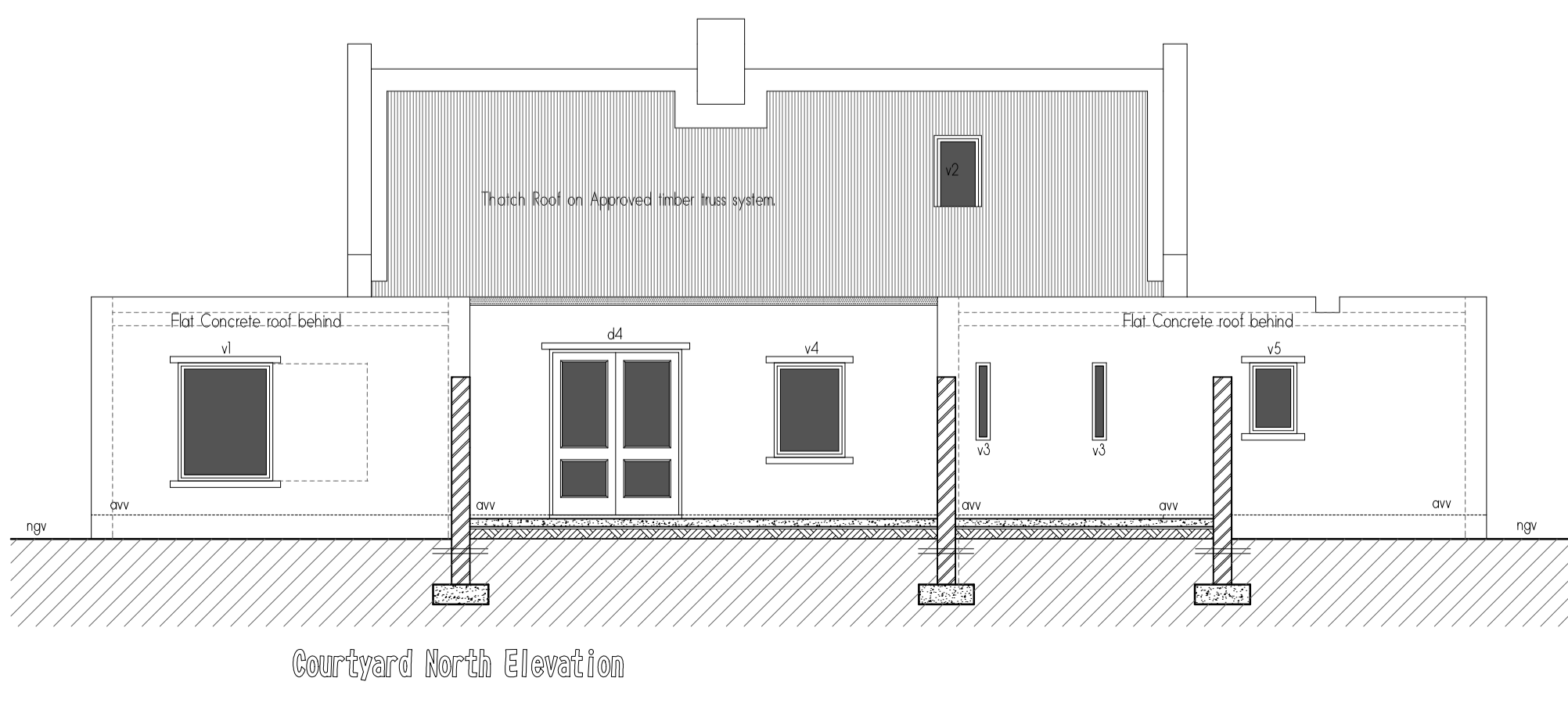
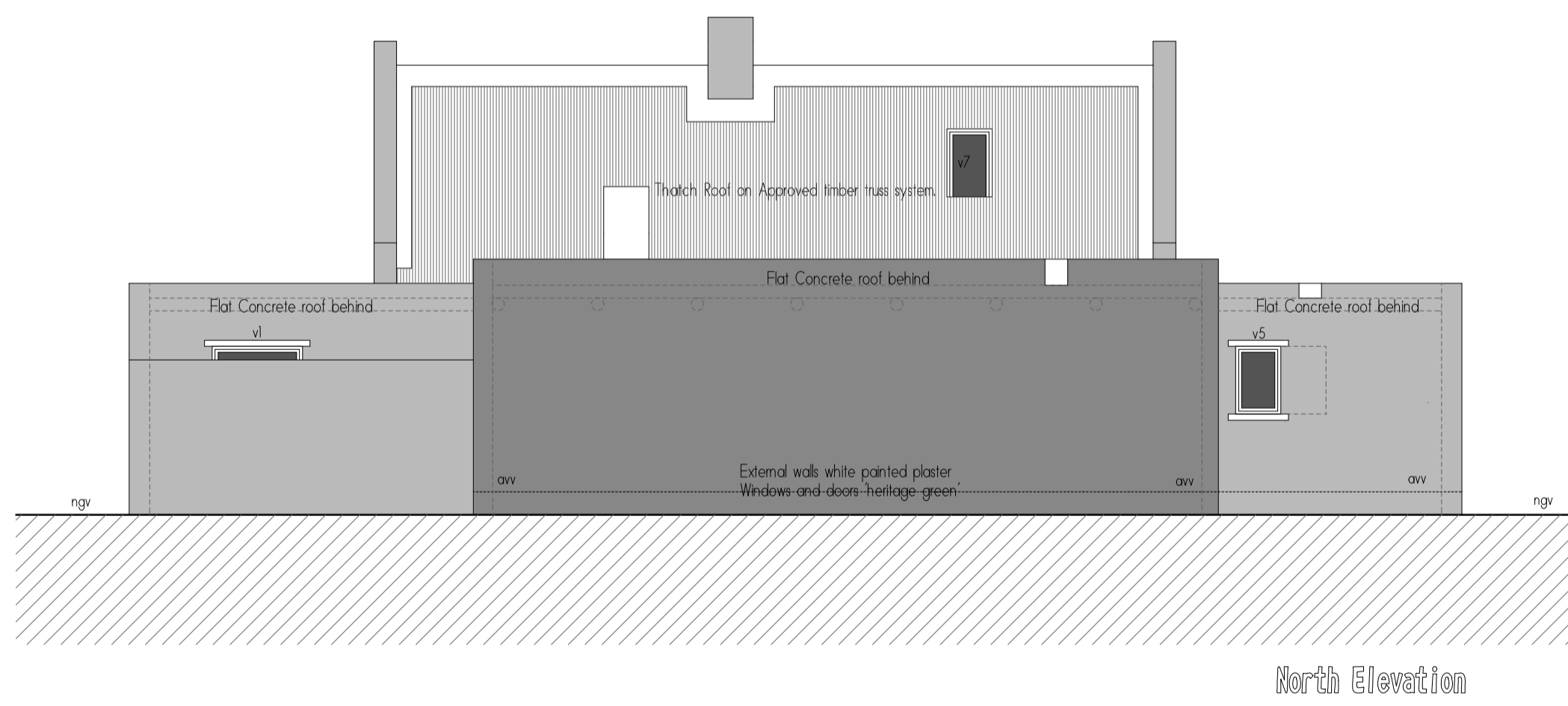
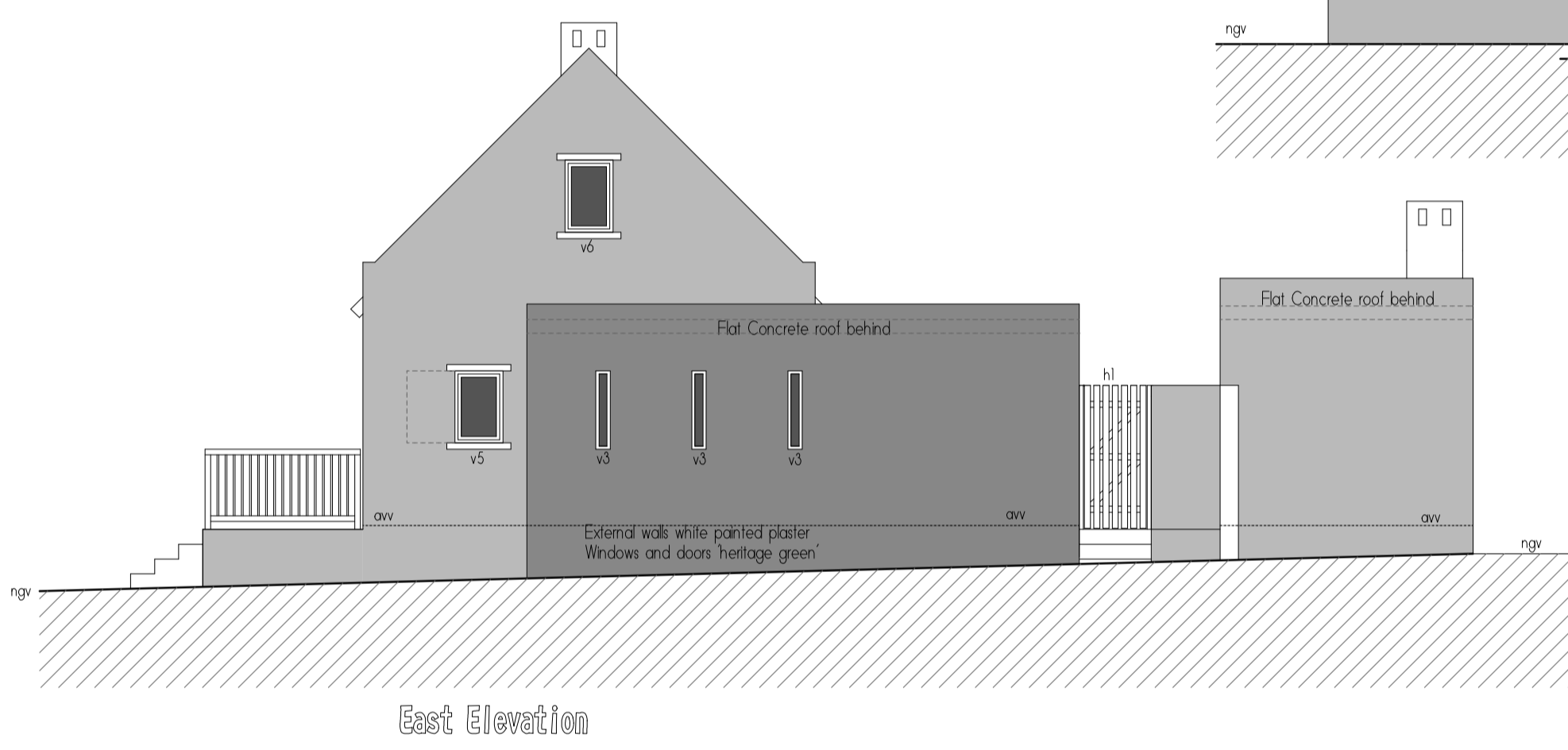
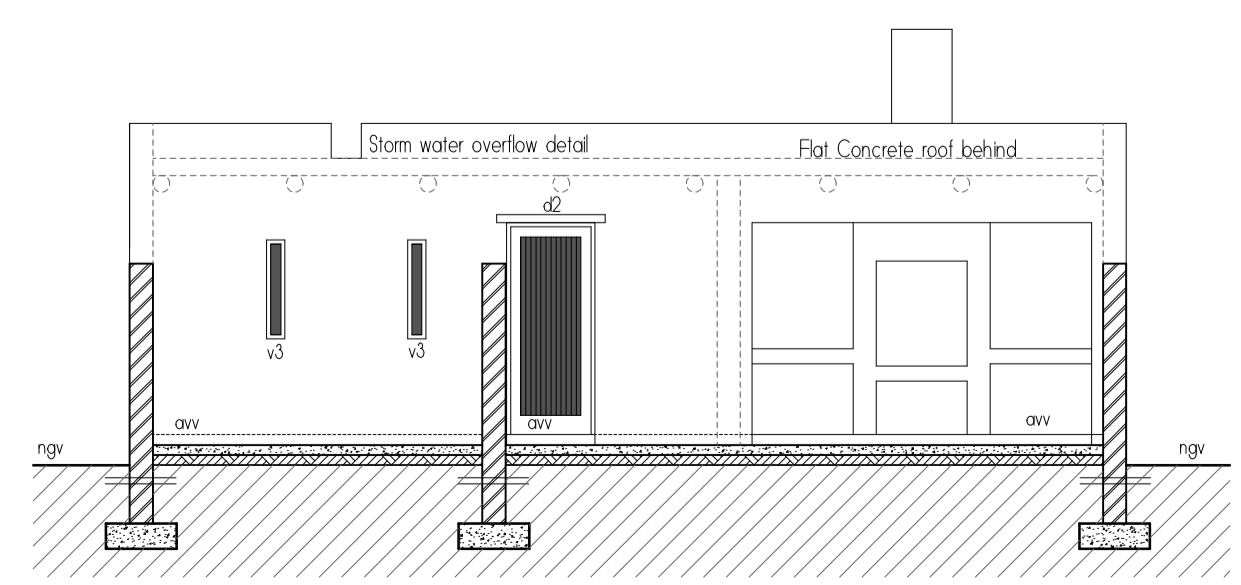
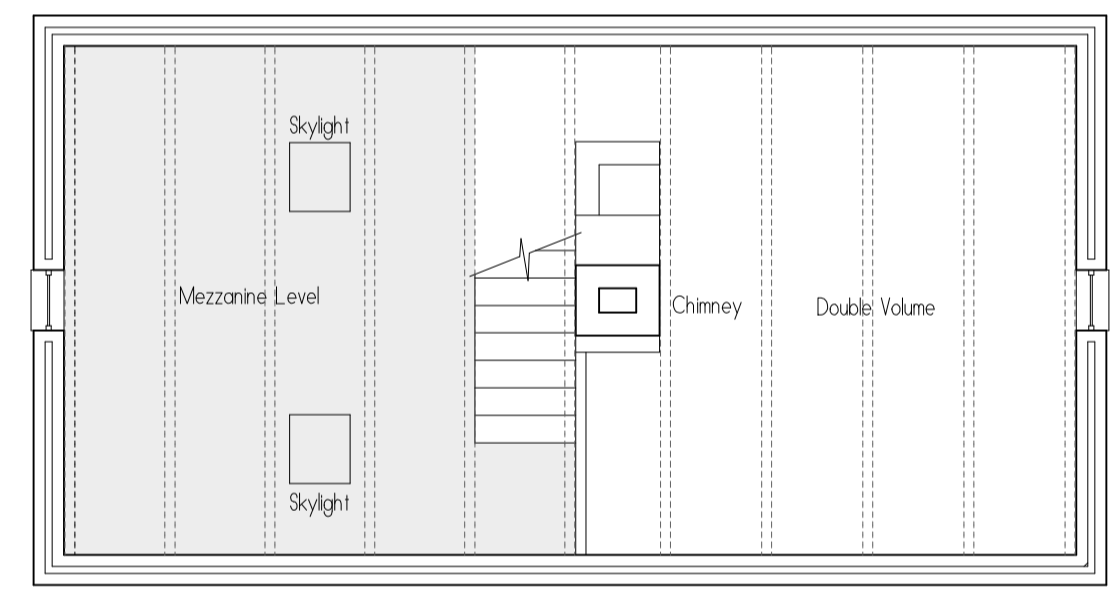
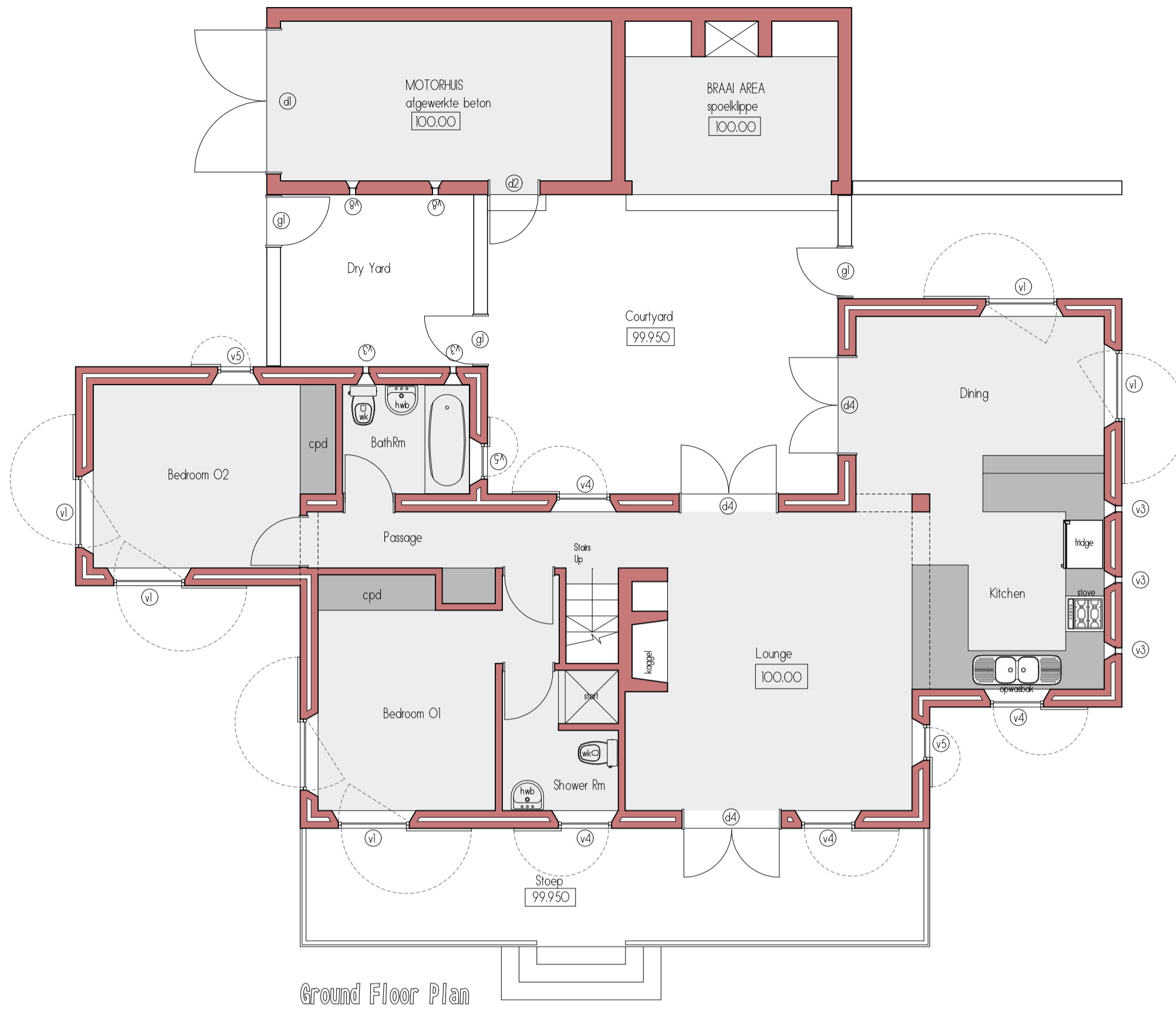


Building Areas	
Ground Floor	: 139,75m ²
Mezzanine	: 21,75m ²
Steep & Courtyard	: 62,10m ²
Store	: 17,07 m ²



contractor to keep a full set of drawings on site - contractor is responsible for correct setting out on site with particular reference to boundaries and building line - contractor to verify all levels and dimensions on site and to check same against architects drawings before commencing work - figured dimensions to be used in preference to scaled dimensions - larger scaled details to be used where available - any errors, discrepancies or omissions are to be reported to the architect immediately for clarification before any work is undertaken

de konsentour moet in voldoende mate telkens op die terrein aankom - die konsentour is verantwoordelik vir die korrekte uitleg van die geboue op die terrein vandat ten opsigte van boulyne en grense - die konsentour moet ooreenskomstig met die werkbeginsels die veldke en omtrentige nagaan en vergelyk met die argitekturente - geseene omtrentige moet voorleer geneem word - die konsentour moet ooreenskomstig met die werkbeginsels die veldke, verande en waggelinge moet omtrentlik by die argitekturente word

project

Fynbosstrand (Pty) Ltd

TYPE C - For Presentation

title
Floor Plans
Elevations
Sections
Presentation Only

date
2016

scale
1:75 (A1)

reference
TYPE C

revision