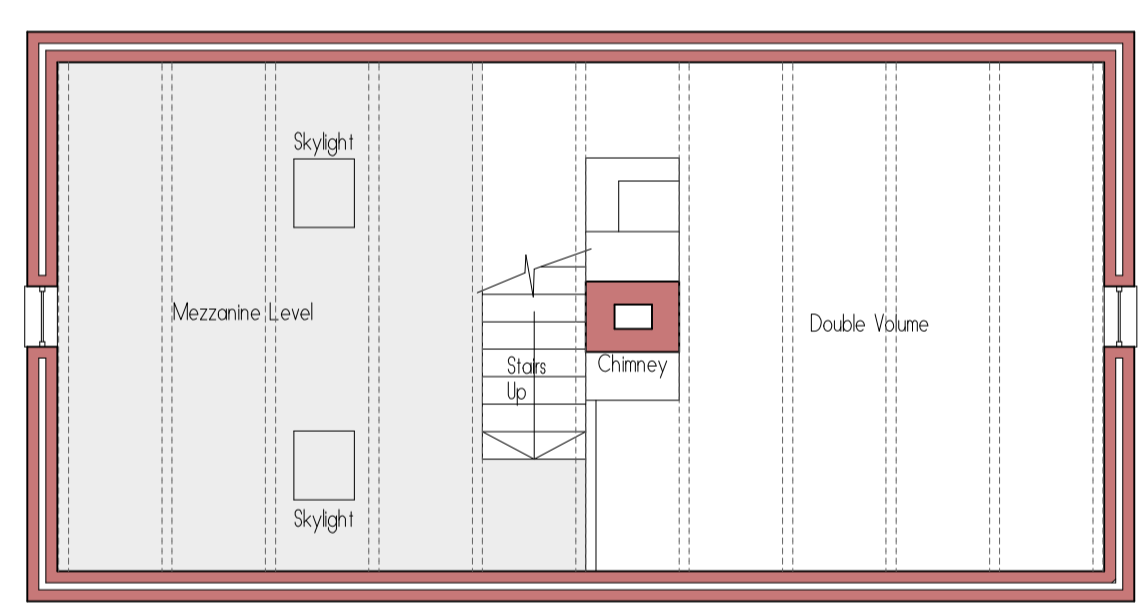


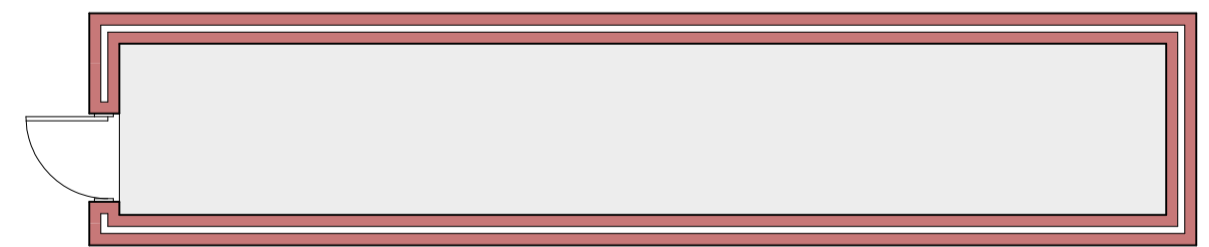
Building Areas	
Ground Floor	: 144,20m ²
Mezzanine	: 22,43m ²
Steep & Courtyard	: 79,95m ²
Store	: 17,65 m ²



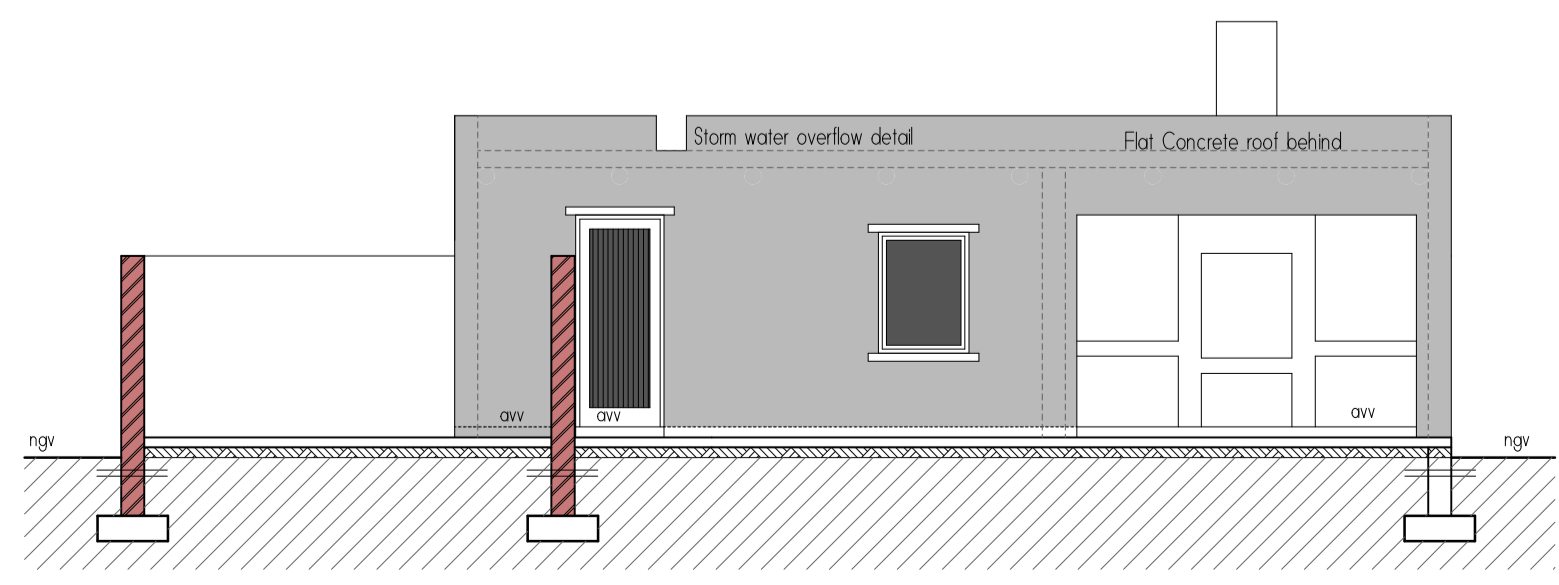
Ground Floor Plan
Type B



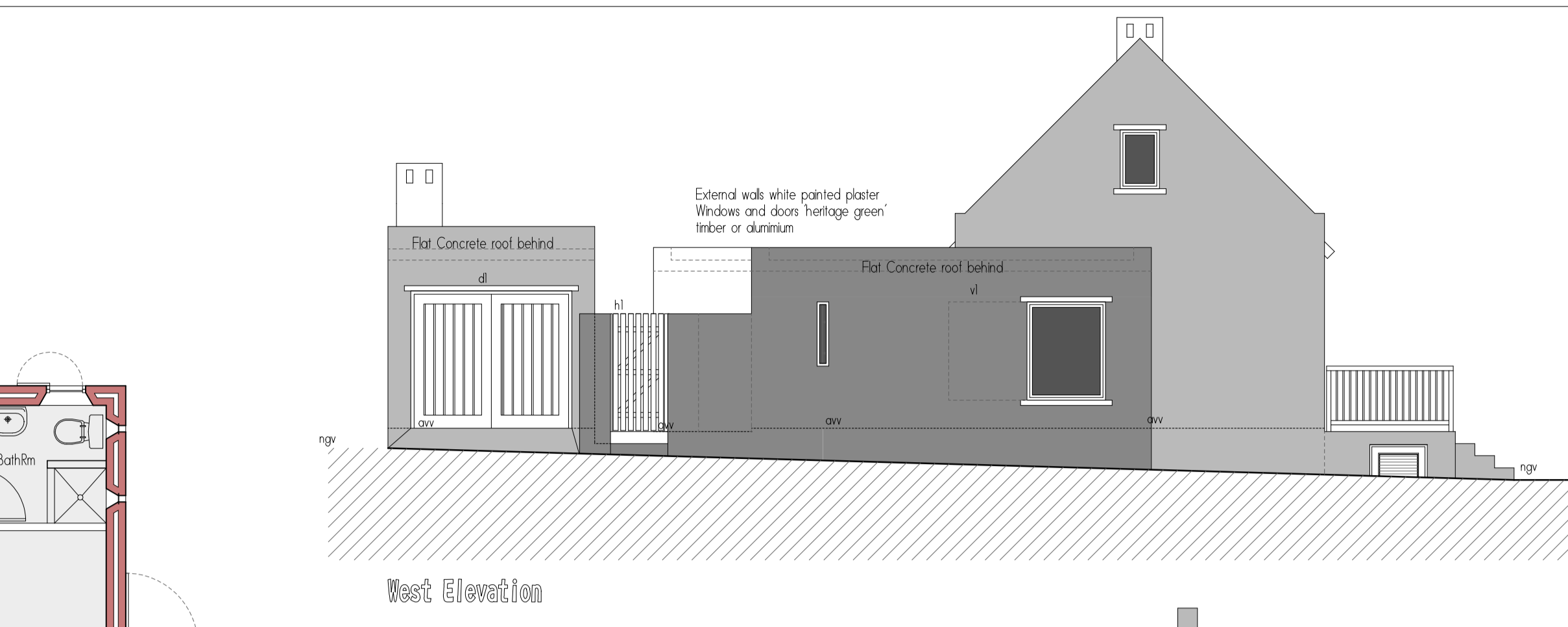
Mezzanine Level



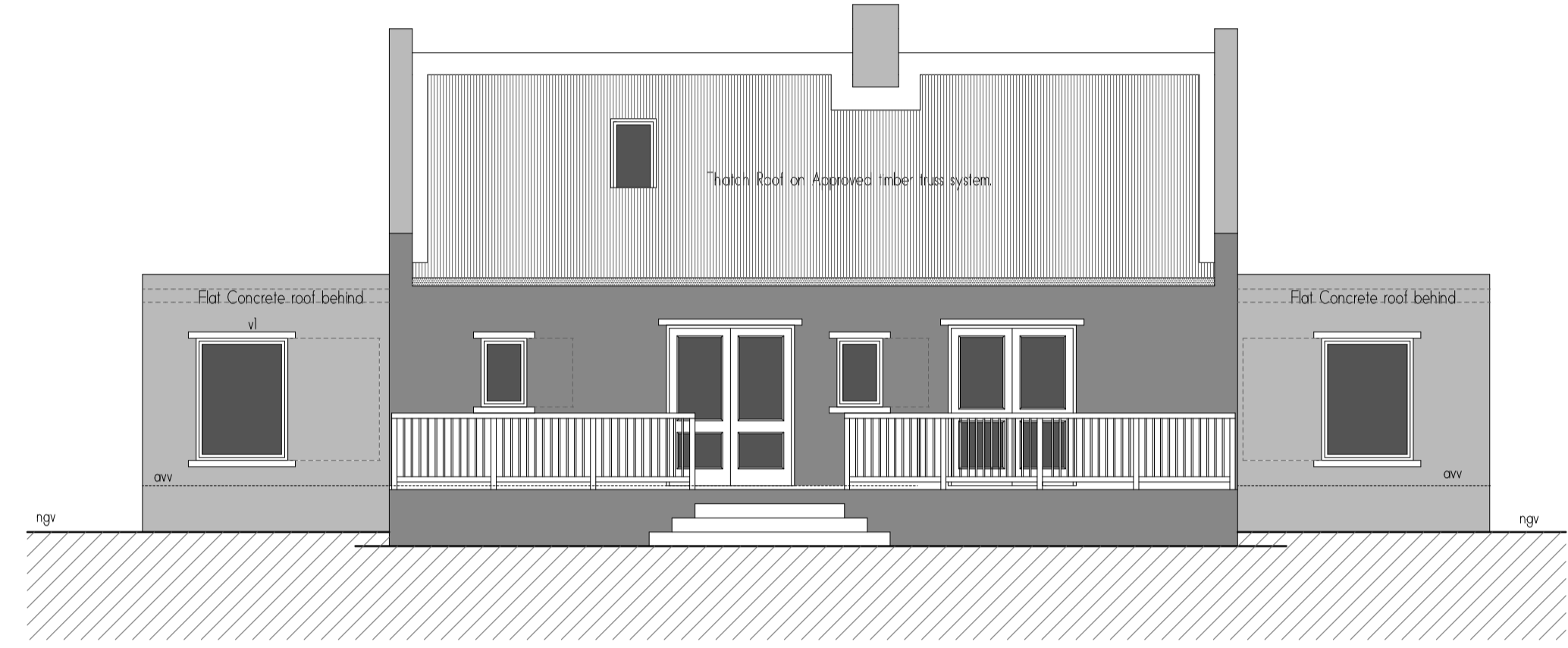
Basement Level Store



Courtyard South Elevation



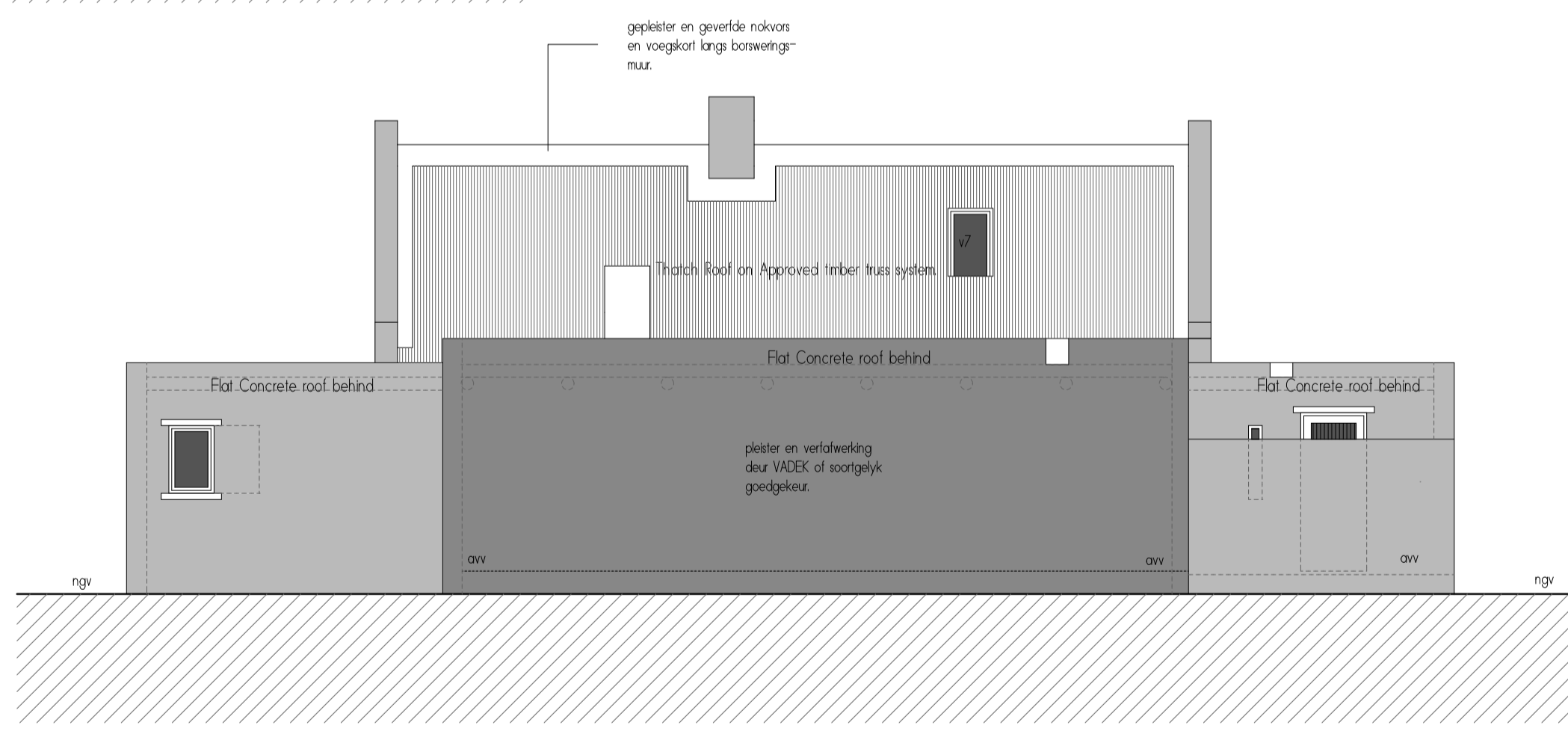
West Elevation



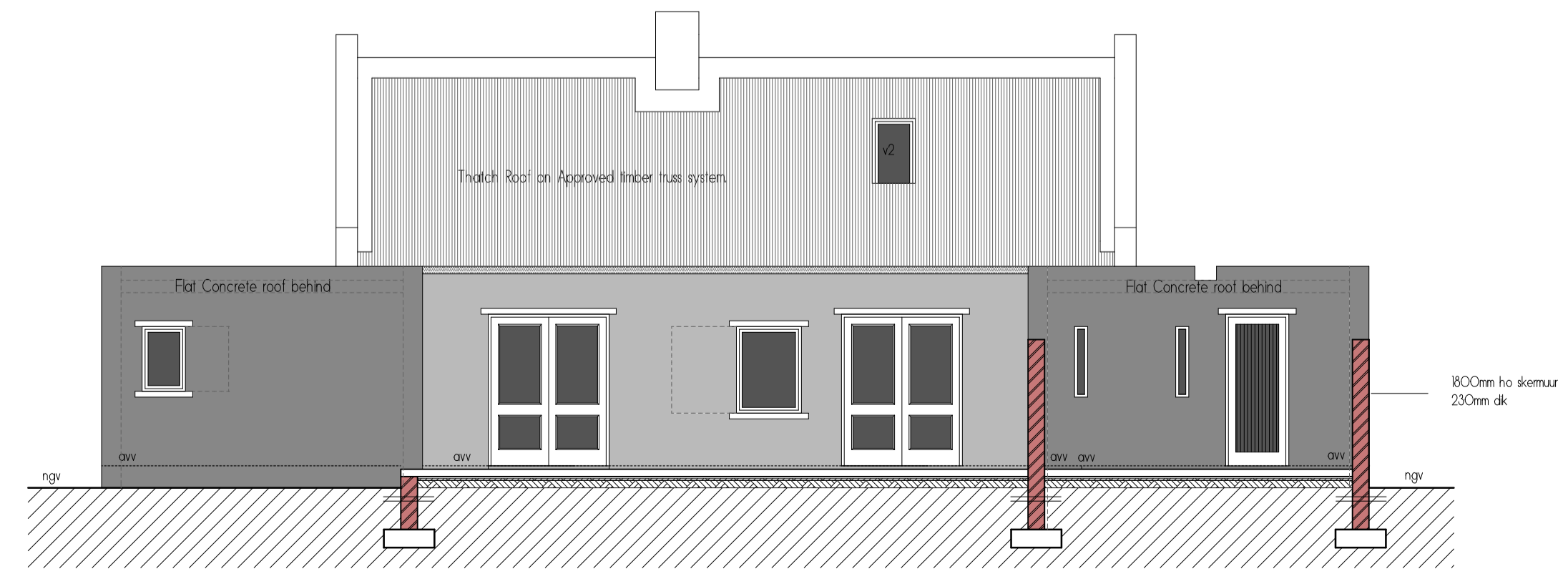
South Elevation



East Elevation



North Elevation



Courtyard North Elevation

- architect to verify all drawings on site - contractor is responsible for correct setting out on site with particular reference to boundaries and building lines - contractor to verify all levels and dimensions on site and to check some apparent architectural drawings before commencing work - figure dimensions to be used in preference to scaled dimensions - large scaled details to be used where available - any minor discrepancies or omissions are to be reported to the architect immediately for clarification before any work is undertaken

- die konstruksie moet in ooreenstemming met die spesifisering van die projek wees - die konstruksie moet in ooreenstemming met die spesifisering van die projek wees - die konstruksie moet in ooreenstemming met die spesifisering van die projek wees - die konstruksie moet in ooreenstemming met die spesifisering van die projek wees

project

Fynbosstrand (Pty) Ltd

TYPE B - Presentation Only

title

Floor Plans
Elevations
Sections
Presentation Only

date

2016

scale

1:75 (A1)

reference

TYPE B